

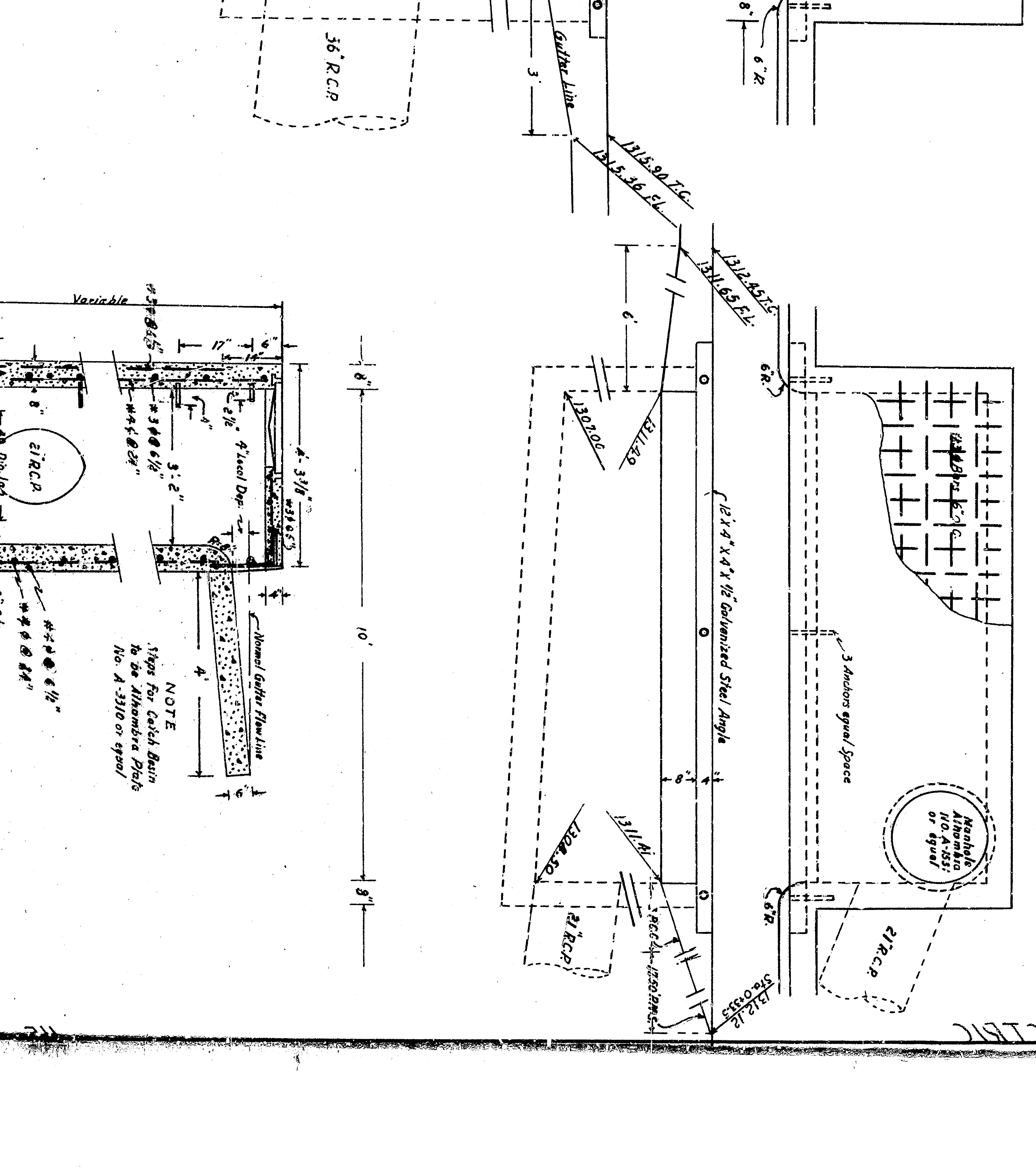
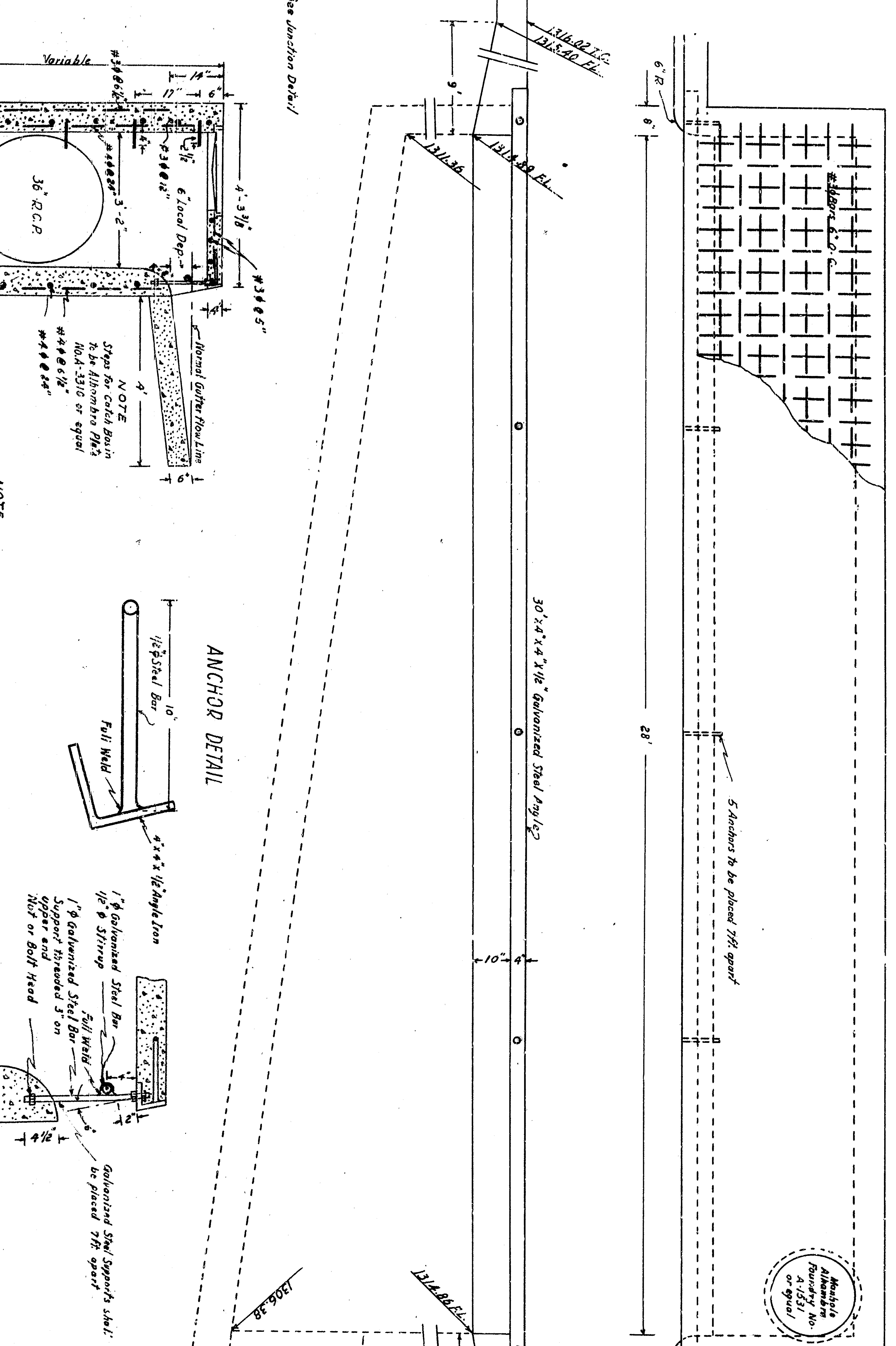
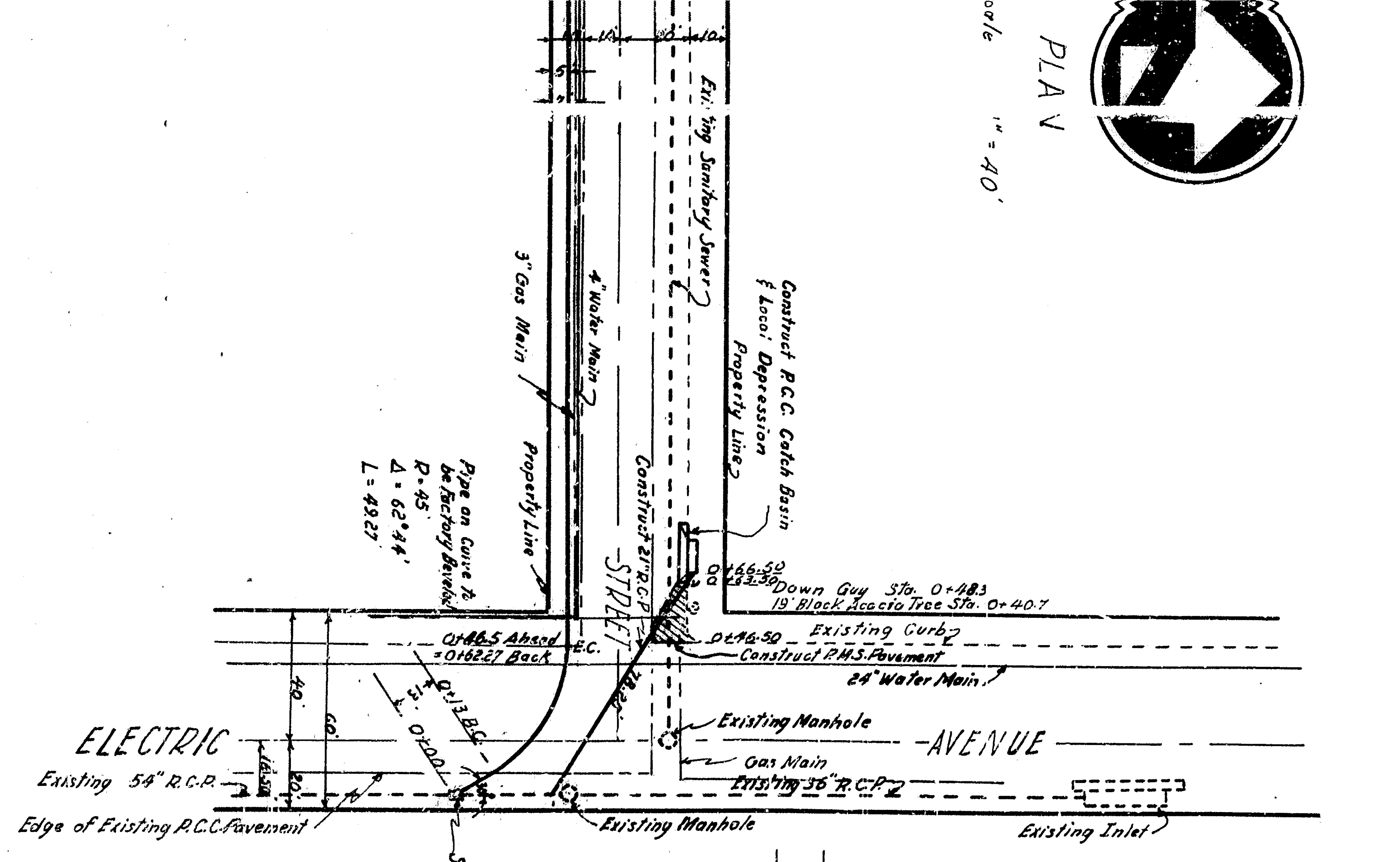
INLET DETAIL
Scale 1/2" = 1'

INLET DETAIL
Scale 1/2" = 1'

JUNCTION DETAIL
Scale 1/2" = 1'

NOTES

- 1- All types of junctions to be covered for safety by flagging.
- 2- The face of junction with 36" pipe to be covered by flagging.
- 3- 12% of manufacturing yield from 36" and 54" pipes at junctions to be withheld.
- 4- Contractor to furnish Engineer with 192" x 96" sheet.
- 5- All R.C.P. to be standard strength.



ANCHOR DETAIL
Scale 1" = 1'

PROTECTION BAR DETAIL
Scale 1" = 1'